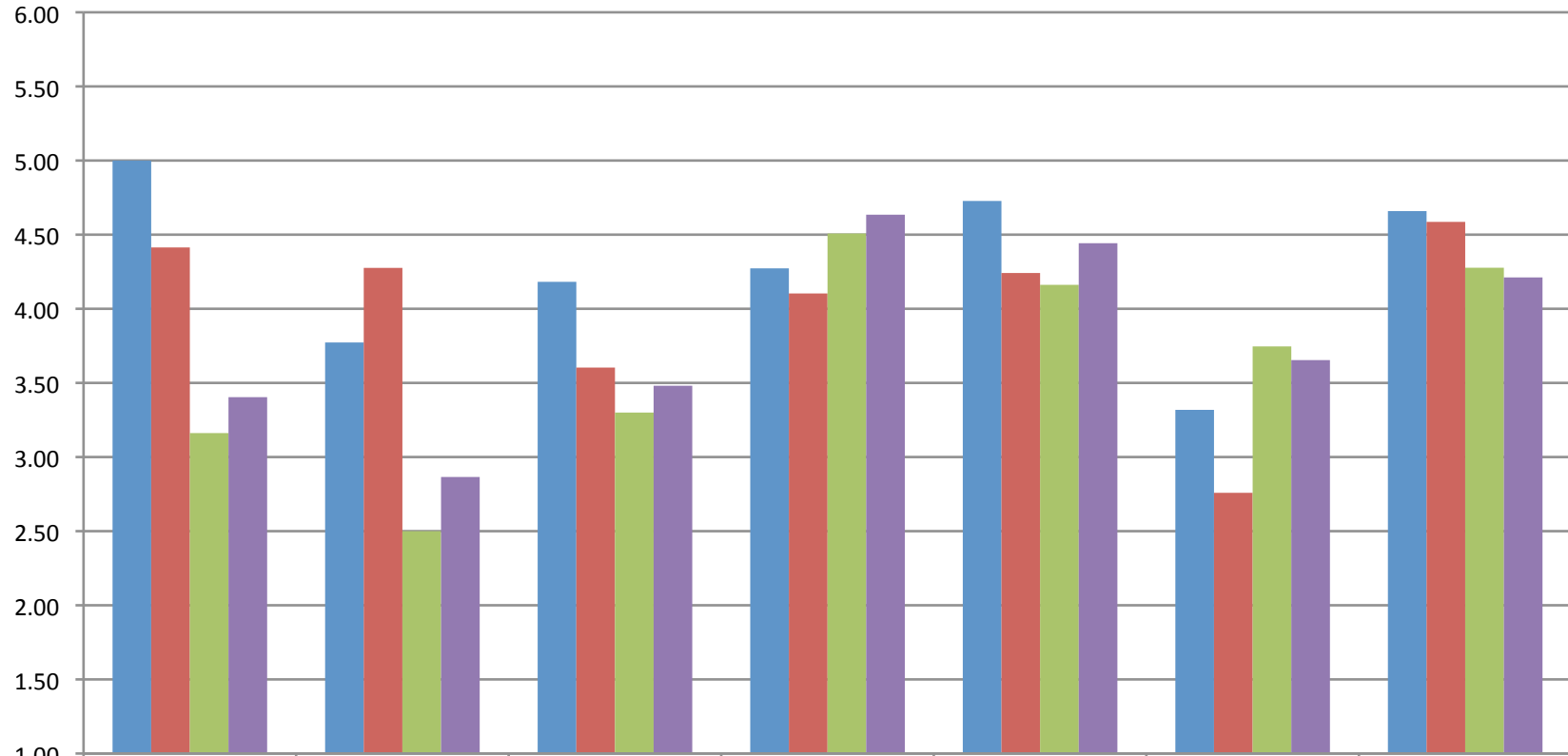


Who would you trust?



	A) Federal, State, or Provincial Pipeline Regulator	B) Pipeline Company Employee	C) Technical consultant hired by the local government	D) Non-profit Pipeline Safety Advocate	E) Local Fire Chief or Emergency Responder	F) Environmental / Community Group	G) A group made up of a mix of the above
Regulators	5.00	3.77	4.18	4.27	4.73	3.32	4.66
Industry	4.41	4.28	3.60	4.10	4.24	2.76	4.59
All Others	3.16	2.50	3.30	4.51	4.16	3.75	4.28
Buckeye AZ	3.40	2.87	3.48	4.63	4.44	3.65	4.21