

Red Butte Spill Ongoing Efforts Post Response

**WASATCH FRONT
PIPELINE SAFETY
CONFERENCE**

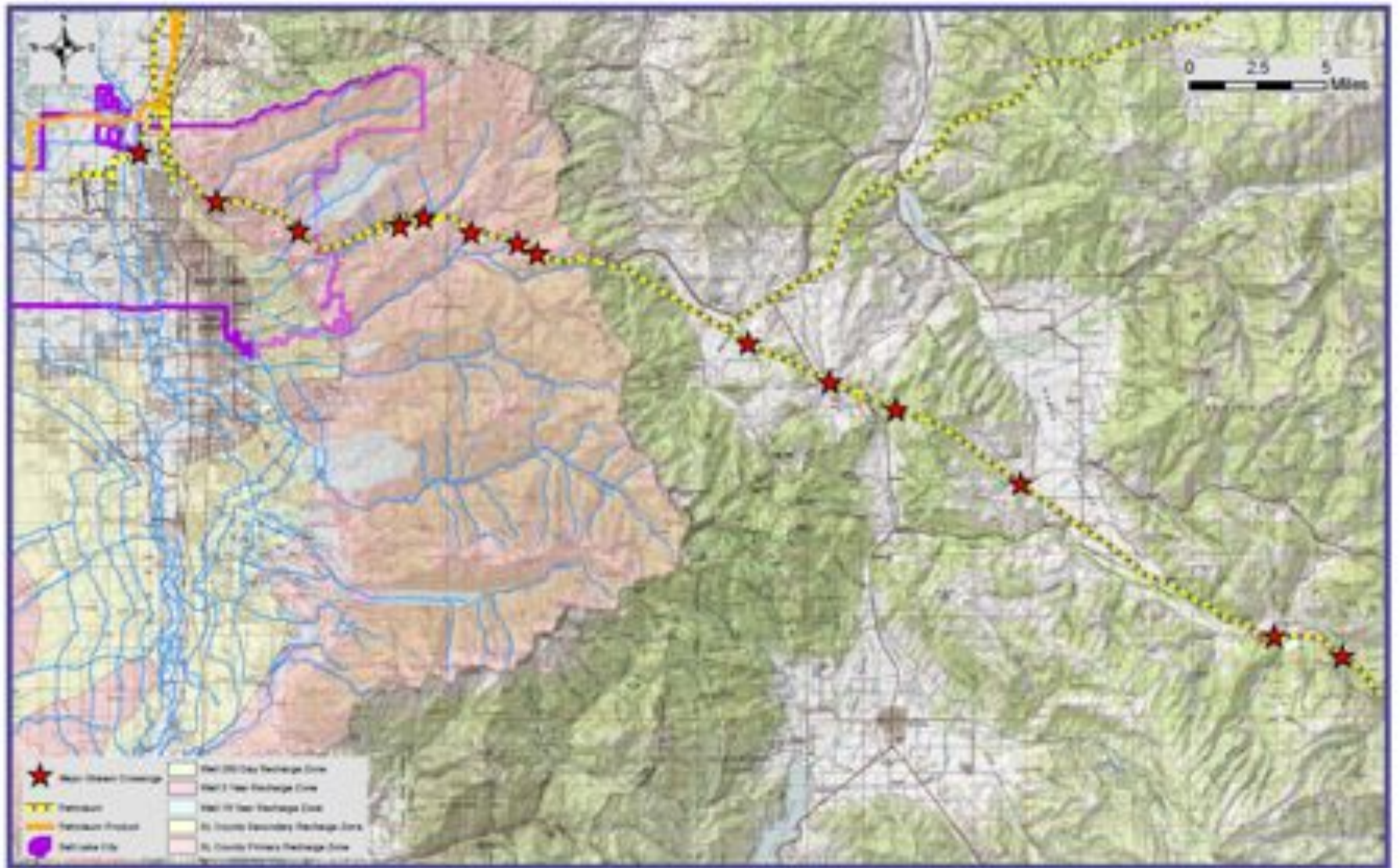
Red Butte Response Phases

- Initial response
- Containment
- Clean-up
- Restoration
- Ongoing Monitoring
- Prevention









Ongoing Activity

- Improved leak detection process and protocols
- Visual camera observation of crossings and valves
- Series of meeting with water agencies
- Valve Study prepared and submitted to PHMSA
- Additional study of Provo River Crossing to lower pipe
- Worked out strategic pre placement of response equipment
- Conducted in field train exercise with Chevron and water agency response crews
- Recommended valve work to begin this summer

**STREAM CHANNEL PHYSICAL
HABITAT AND RIPARIAN VEGETATION
EVALUATION**

Ongoing obligation to restore impacts from clean-up activity

- Invasive weeds
- Erosion caused by rock dislodgement and deluge scouring
- Loss of woody debris
- Changed overhanging vegetation over story
- Pioneered access trails for cleaning
- Report recommends 66 specific action measures
- Estimated cost \$382,000

Ongoing Monitoring and Response

- Chevron continues to provide quarterly monitoring water, sediment and macroinvertebrates along Red Butte and control streams
- Required for four consecutive quarters meeting DWQ clean up criteria
- Long term monitoring plan under development
- Chevron required to respond to any observed contamination and mitigate anything above cleanup levels