



Red Butte Creek Environment



Key Environmental Issues

Restoration and Reclamation

Urbanization Impacts and Baselines

Prevention and Cost of Long Term Remediation

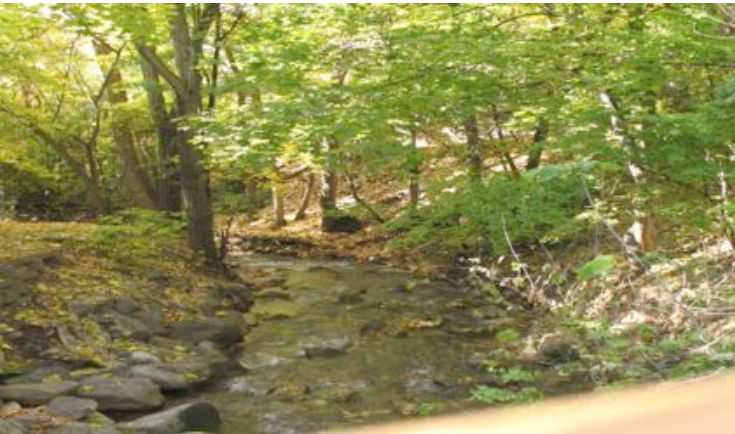
Stewardship

Oil Spill Work Group
Environment Team





Stream Restoration for Entire Ecosystem



Can Pre-Existing Hydrological Character Be Restored?

Restore Natural Meanders and Flow Line

Will In-Channel Structures Enhance Fish Habitat?

Measure & Predict Micro biota Return

Where Have the Birds Gone?

When Should They Return?

What Happens If Flora and Fauna Do Not Return?





Restoration and Reclamation

What Is the Most Effective Method to Achieve Restoration?

Clearly Define Reclamation and Restoration Timeline



Critical Issues to Address

Eroded Banks from Power Cleaning of Creek Banks and in Stream Beds

Techniques to Mitigate High Velocity Water/
Man-made Erosion

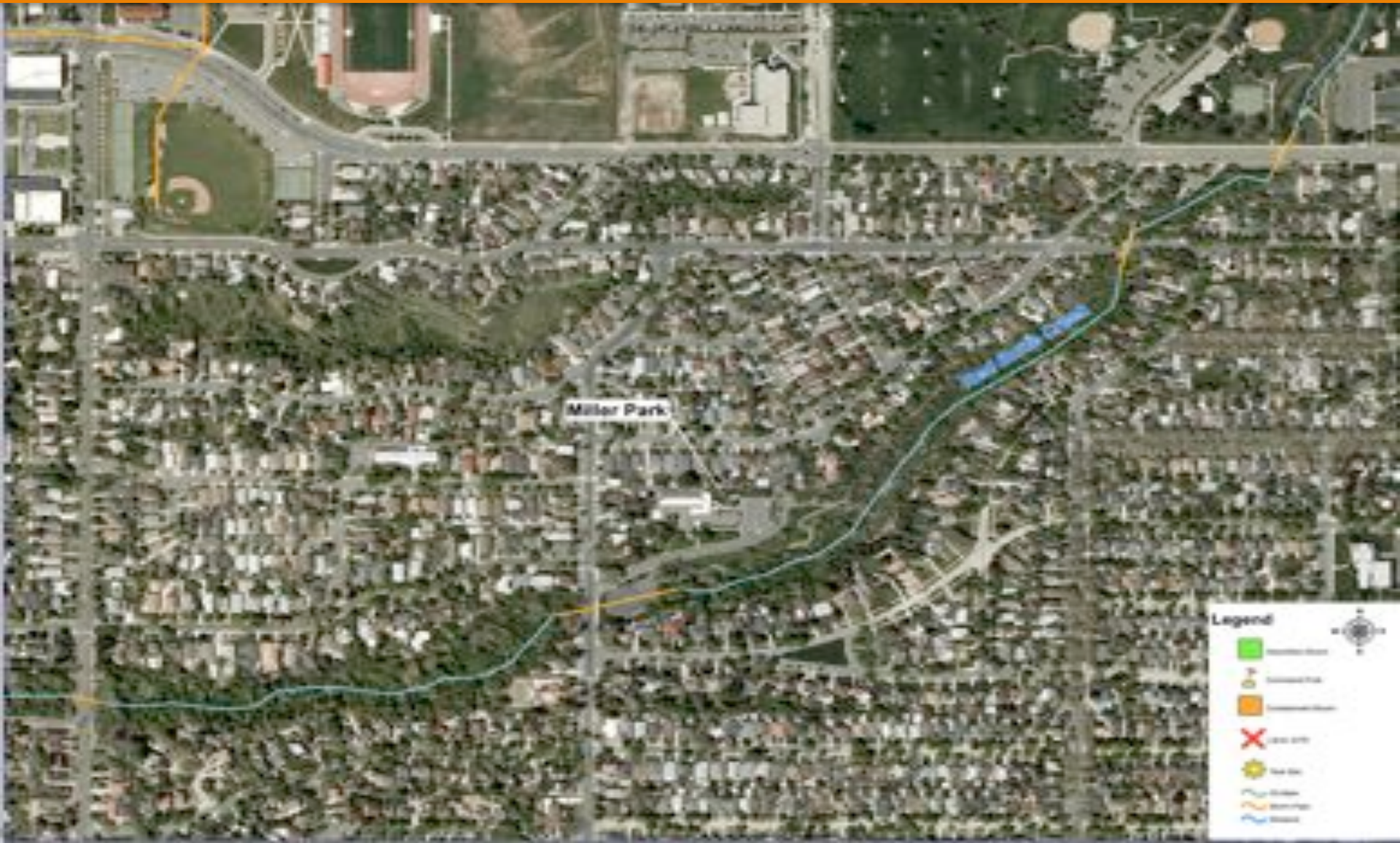
Restoration of Riparian Ecotomes for Vegetation
Along Banks

Urbanization Impacts and Baseline Measurements



Define Impacts of Traditional Urban Emissions

What Are Urbanization Impacts / Baseline Measurements?



Prevention, Testing and Cost of Long-Term Remediation



Testing for Biota by Cutthroat Introduction

What Measures to Prevent / Respond to Spills are Practicable?

Were Chevron's Methods Optimal for the Creek and Community Circumstance?

Who Will Assure Long-Term Remediation?





Stewardship

How Will City Engage Community and Professionals in Stream Restoration / Design?

What Would Constructed Wetlands as a Future Oil Spill Prevention System Accomplish?

Will an “Adopt-a-Stream” Program be Effective?

Can Monitoring be Accomplished by Citizen Volunteers?

How Would a Child / Youth Riparian Education Curriculum and Program be Created and Implemented?

